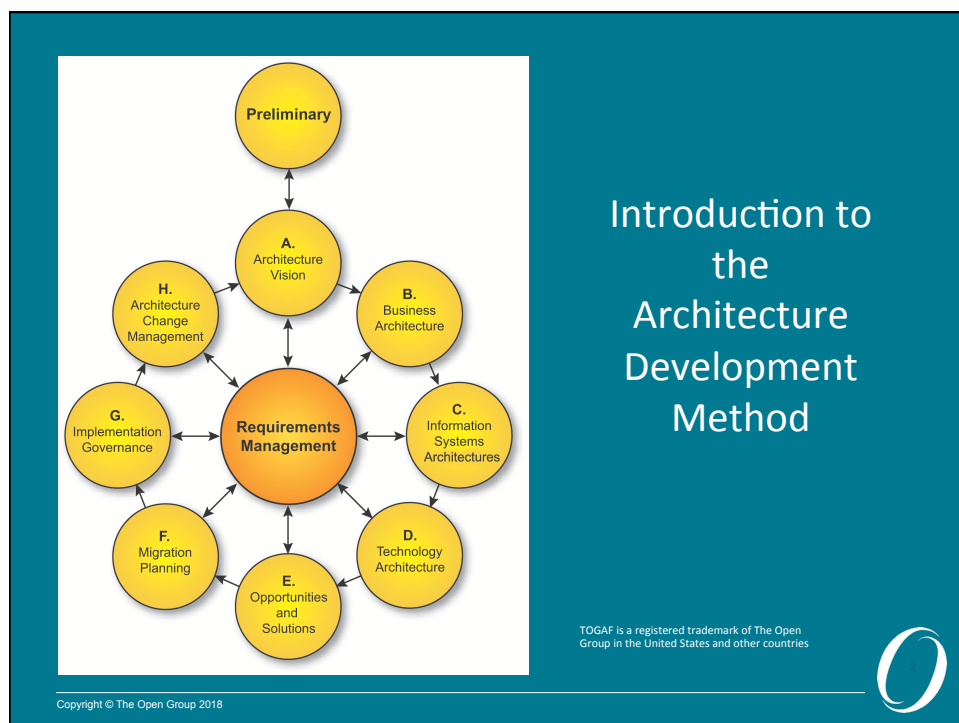




Copyright © 2009-2018 The Open Group, All Rights Reserved



Personal PDF Edition. Not for redistribution.

Module Objectives

The objectives of this module are to describe:

- » The TOGAF ADM
- » Its relationship to other parts of the TOGAF standard
- » The phases of the ADM
- » How and why to adapt the ADM
- » How to scope an architecture activity
- » The need for an integration framework

Copyright © The Open Group 2018

3

Copyright © 2009-2018 The Open Group, All Rights Reserved

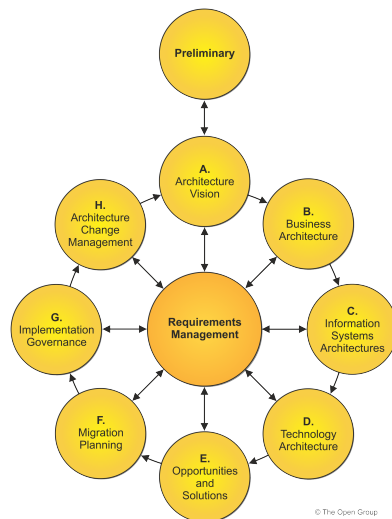
What is the TOGAF ADM?

- » The ADM forms the core of the TOGAF framework
- » The result of contributions from many architecture practitioners
- » A process for developing an enterprise architecture
- » Integrates all the elements within the TOGAF standard
- » Designed to address enterprise's business and IT needs by providing:
 - A set of architecture views (business, data, application, technology)
 - A set of recommended deliverables
 - A method for managing requirements
 - Guidelines on tools for architecture development

Copyright © The Open Group 2018

4

Architecture Development Method – Process



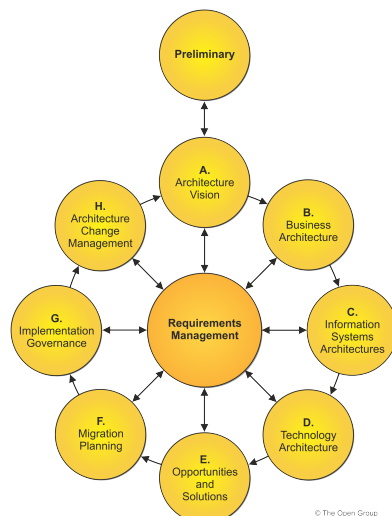
- » The ADM is an iterative process:
 - Over the whole process
 - Between phases
 - Within phases
- » For each iteration, re-consider:
 - Scope
 - Detail
 - Schedules, milestones

Copyright © The Open Group 2018

5

Copyright © 2009-2018 The Open Group, All Rights Reserved

Architecture Development Method – Process

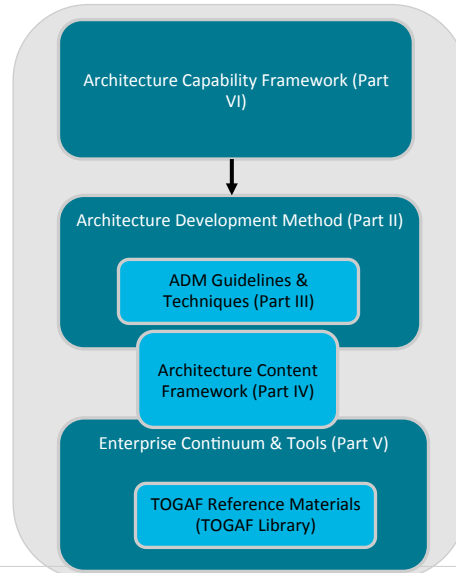


- » Consider assets from:
 - Previous iterations
 - Marketplace, according to availability, competence, and value:
 - Other frameworks
 - Systems models
 - Vertical Industry models

Copyright © The Open Group 2018

6

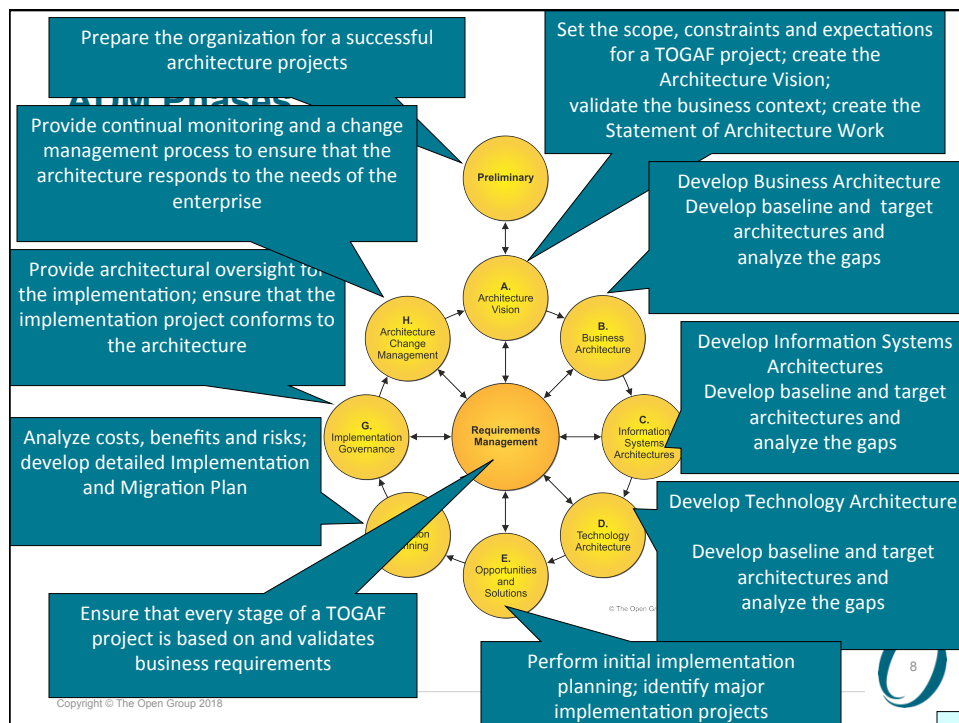
Relationship to other Parts of the TOGAF Standard



Copyright © The Open Group 2018



Copyright © 2009-2018 The Open Group, All Rights Reserved

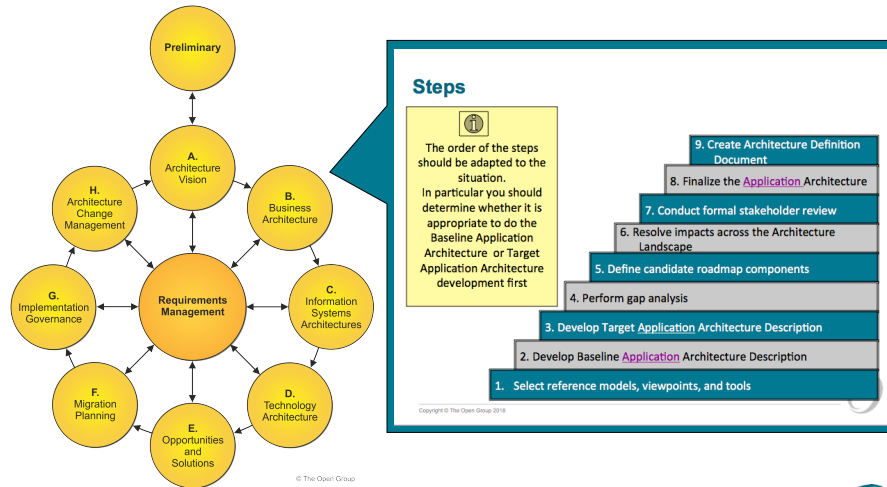


Copyright © The Open Group 2018



Personal PDF Edition. Not for redistribution.

ADM Phase Steps Example



Copyright © The Open Group 2018

Copyright © 2009-2018 The Open Group, All Rights Reserved

ADM Inputs and Outputs

- » The TOGAF standard defines a number of input and output deliverables for each ADM phase
 - These are suggestions and need not be followed exactly
 - Output of an early phase may be modified in a later phase
 - Version numbers are used to manage the output
 - A convention is used to illustrate the evolution of deliverables
 - 0.1 – a high level outline deliverable
 - 1.0 – a formally reviewed detailed deliverable

Copyright © The Open Group 2018

Adapting the ADM

- » Generic methodology intended for variable:
 - Geographies
 - Vertical sectors
 - Industry types
- » Usable with deliverables of other frameworks such as Zachman, DODAF, ...
- » It is usual to modify or extend the ADM to suit specific needs

Copyright © The Open Group 2018

11

Copyright © 2009-2018 The Open Group, All Rights Reserved

Governing the ADM

- » The ADM, whether adapted or used as is, is a key process to be managed and governed
- » The Architecture Board should be satisfied that the method is being applied correctly
- » The management of all architectural artifacts, governance and related process should be supported by a controlled environment such as a repository

Copyright © The Open Group 2018

12

Governance Repository

- » Reference Data
- » Process Status
- » Audit Information

Copyright © The Open Group 2018

13

Copyright © 2009-2018 The Open Group, All Rights Reserved

Reasons to constrain the Scope of Architectural Activity

- » The organizational authority of the team producing the architecture
- » The objectives and stakeholder concerns to be addressed within the architecture
- » The availability of people, finance, and other resources

Copyright © The Open Group 2018

14

Scoping the Architecture Activity

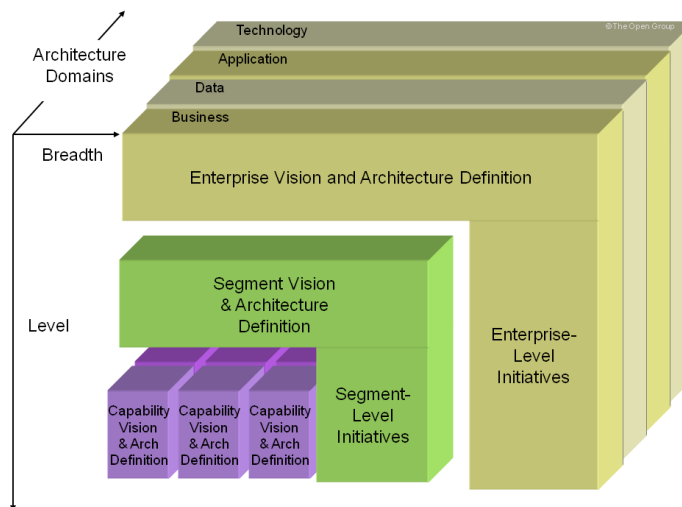
- » There are four dimensions in which scope may be limited:
- Breadth
 - Depth
 - Time Period
 - Architecture Domains

Copyright © The Open Group 2018

15

Copyright © 2009-2018 The Open Group, All Rights Reserved

Architecture Integration



Copyright © The Open Group 2018

16

Summary

- » The ADM is a comprehensive, general method
- » It recommends a sequence for various phases and steps involved in developing an architecture
- » It is an iterative method
- » It draws on the other parts of the TOGAF framework for assets and processes
- » It can be used with other deliverables from other frameworks

Copyright © The Open Group 2018

17

Copyright © 2009-2018 The Open Group, All Rights Reserved

Test Yourself Question

Copyright © The Open Group 2018



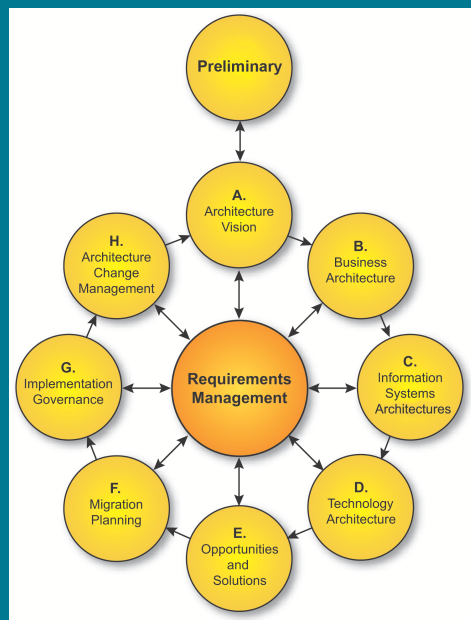
Test Yourself Question

- Q. The following statements describe the phases of the ADM, *except* ?
- A. They are cyclical.
 - B. They are iterative.
 - C. Each phase refines the scope.
 - D. Each phase is mandatory.
 - E. The phases cycle through a range of architecture views.

Copyright © The Open Group 2018

19

Copyright © 2009-2018 The Open Group, All Rights Reserved

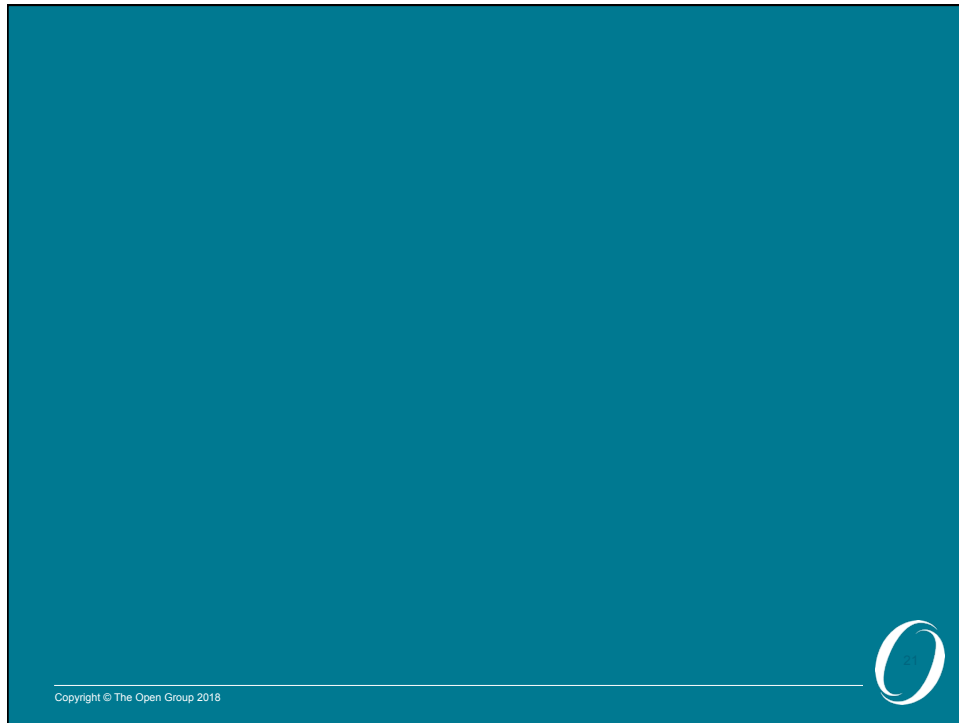


Introduction to the Architecture Development Method

TOGAF is a registered trademark of The Open Group in the United States and other countries

Copyright © The Open Group 2018





Copyright © 2009-2018 The Open Group, All Rights Reserved