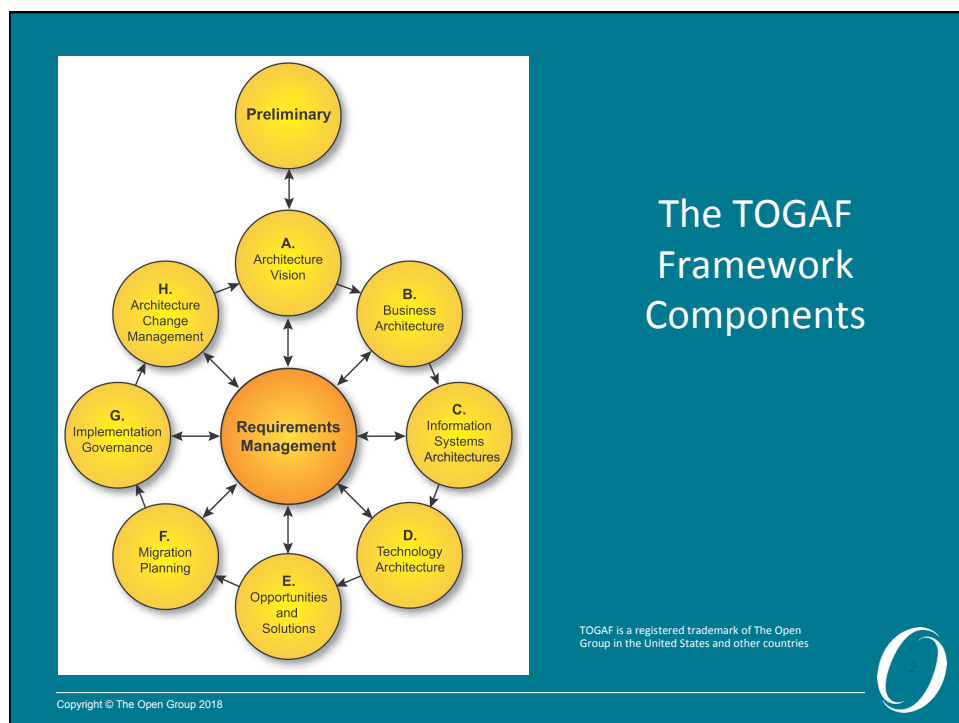




Copyright © 2009-2018 The Open Group, All Rights Reserved



Personal PDF Edition. Not for redistribution.

Module Objectives

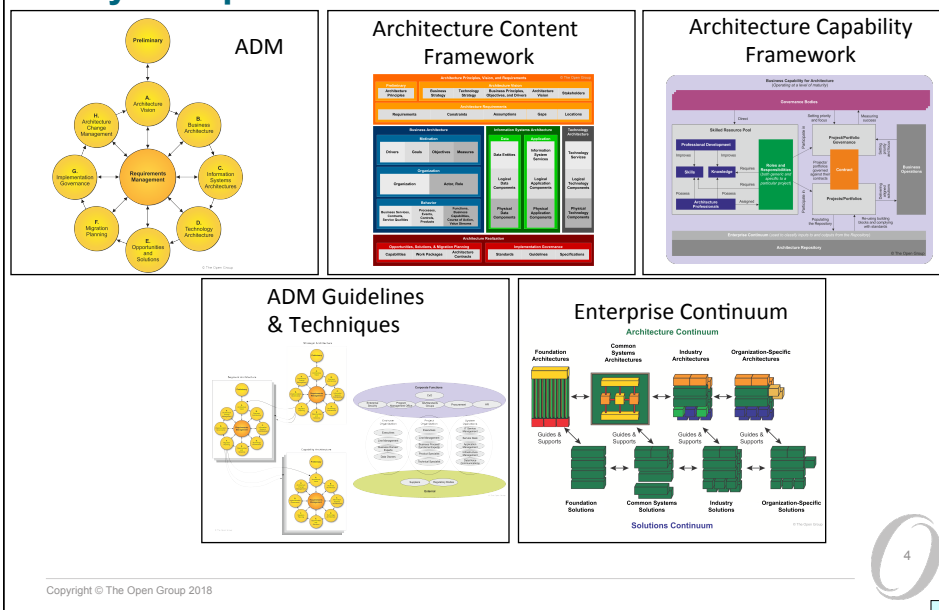
- » To highlight and introduce the main components and key concepts of the TOGAF framework
 - **The Architecture Development Method (ADM)**
 - **ADM Guidelines and Techniques**
 - **Architecture Content Framework**
 - Deliverables, artifacts, building blocks
 - **The Enterprise Continuum**
 - The Architecture Repository
 - **The Architecture Capability Framework**
 - Establishing an EA Capability
 - **The TOGAF Library**

Copyright © The Open Group 2018

3

Copyright © 2009-2018 The Open Group, All Rights Reserved

Key Components of the TOGAF Framework



Copyright © The Open Group 2018

4

The TOGAF Standard, Version 9.2 Table of Contents

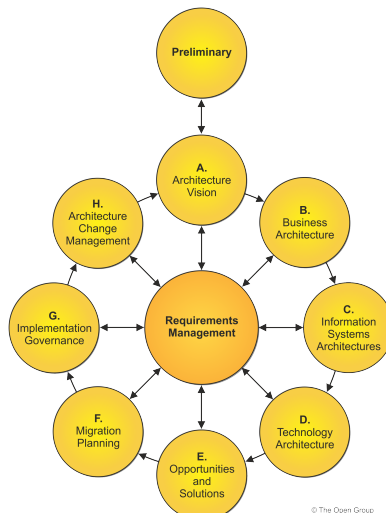
Part I - Introduction
Preface, Executive Overview, Core Concepts, Definitions
Part II - Architecture Development Method
Introduction to ADM
ADM Phase Narratives
Part III - ADM Guidelines and Techniques
Guidelines for Adapting the ADM Process
Techniques for Architecture Development
Part IV - Architecture Content Framework
Content Metamodel
Architectural Artifacts
Architecture Deliverables
Building Blocks
Part V - Enterprise Continuum and Tools
Enterprise Continuum
Architecture Partitioning
Architecture Repository
Tools for Architecture Development
Part VI - Architecture Capability Framework
Architecture Board
Architecture Compliance
Architecture Contracts
Architecture Governance
Architecture Maturity Models
Architecture Skills Framework

Copyright © The Open Group 2018

5

Copyright © 2009-2018 The Open Group, All Rights Reserved

The Architecture Development Method



© The Open Group

Copyright © The Open Group 2018

6

- » The core of the TOGAF framework
- » A proven way of developing an architecture
- » Designed to address business requirements
- » An iterative method
- » A set of architecture views to ensure that a complex set of requirements are adequately addressed
- » Each phase includes objectives, approach, inputs, steps and outputs

ADM Guidelines and Techniques

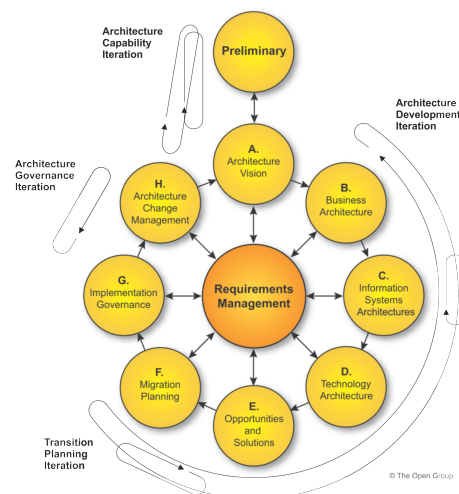
- » A set of guidelines and techniques to support the application of the ADM
- » The guidelines help to adapt the ADM to deal with different scenarios, including different process styles (e.g. the use of iteration) and also specific requirements (e.g. security).
- » The techniques support specific tasks within the ADM (e.g. defining principles, business scenarios, gap analysis, migration planning, risk management, etc).

Copyright © The Open Group 2018

7

Copyright © 2009-2018 The Open Group, All Rights Reserved

Applying Iteration to the ADM

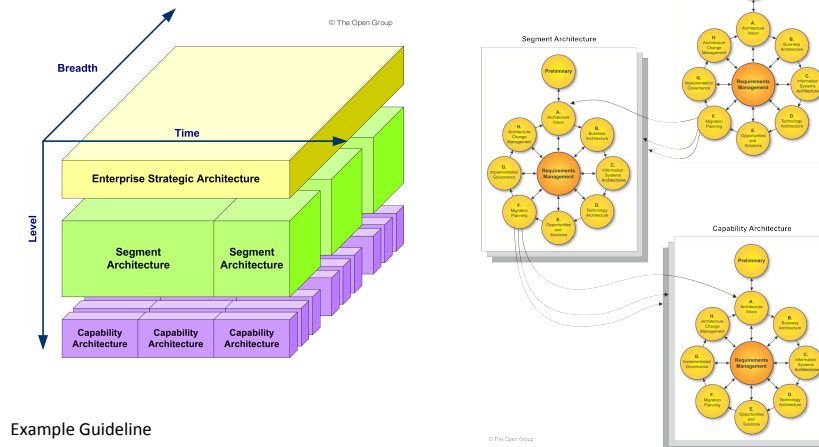


Example Guideline

Copyright © The Open Group 2018

8

Applying the ADM Across the Architecture Landscape

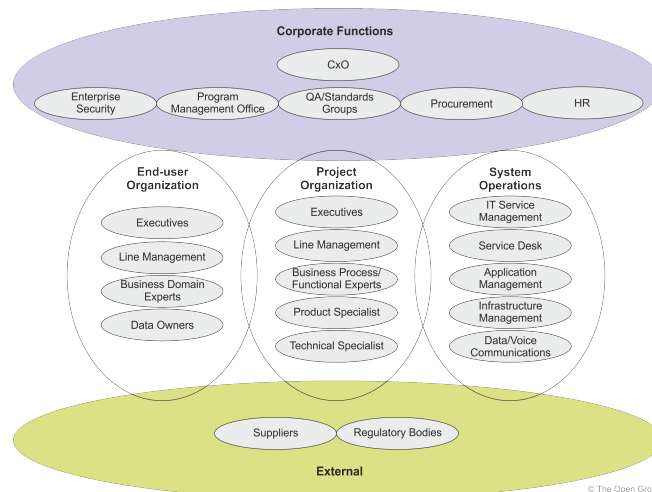


Copyright © The Open Group 2018

9

Copyright © 2009-2018 The Open Group, All Rights Reserved

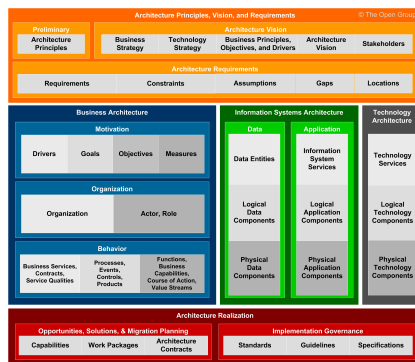
Categories of Stakeholder



Copyright © The Open Group 2018

10

Architecture Content Framework



Provides a detailed model of architectural work products, including **Deliverables**, **Artifacts** within deliverables, and the **Architecture Building Blocks (ABBs)** that deliverables represent.

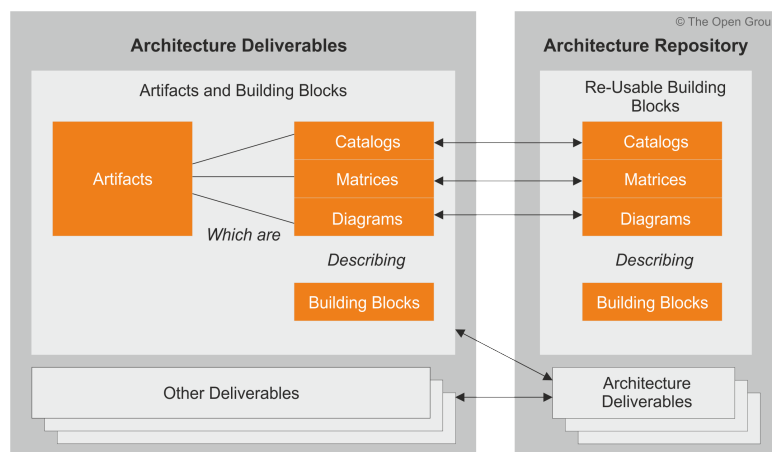
- » It drives for greater consistency in the outputs of the TOGAF ADM
- » It provides a comprehensive checklist of architecture outputs
- » It promotes better integration of work products
- » It provides a detailed open standard for how architectures should be described
- » It includes a detailed metamodel

Copyright © The Open Group 2018

11

Copyright © 2009-2018 The Open Group, All Rights Reserved

Deliverables, Artifacts and Building Blocks

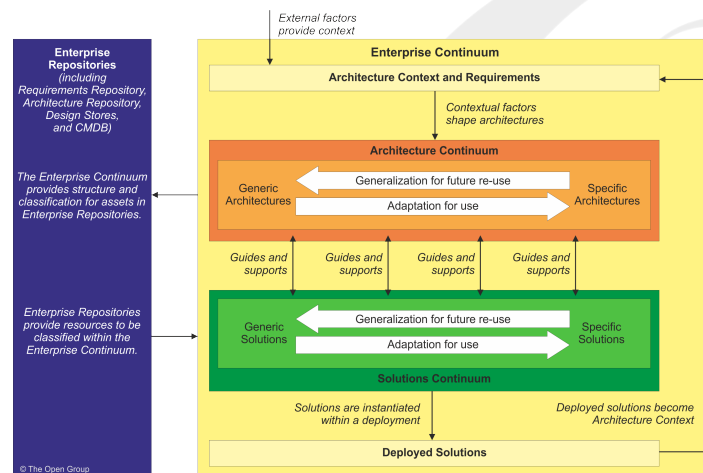


Copyright © The Open Group 2018

12

Copyright © The Open Group 2018

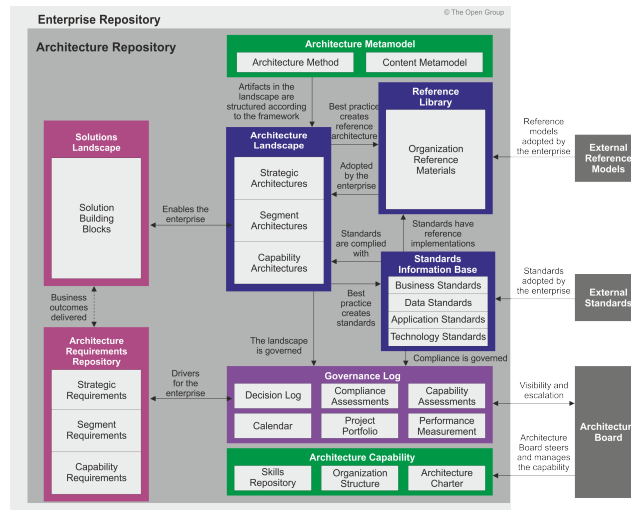
The Enterprise Continuum



Copyright © The Open Group 2018

Copyright 2009-2018, The Open Group

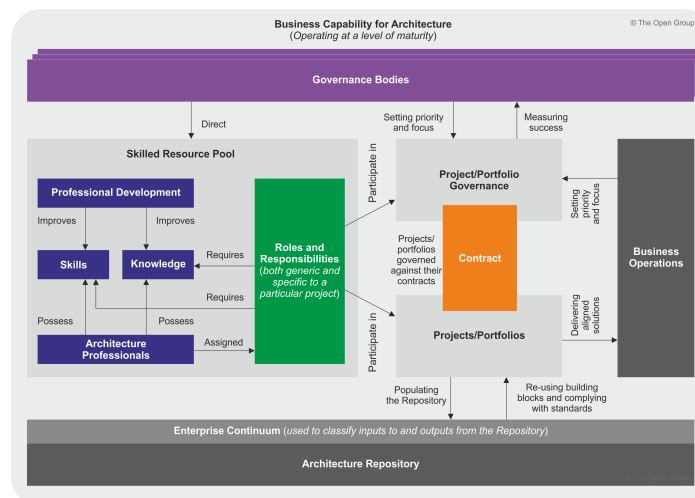
Architecture Repository



Copyright © The Open Group 2018

Copyright © 2009-2018 The Open Group, All Rights Reserved

Capability Framework



Copyright © The Open Group 2018

Establishing the Architecture Capability as an Operational Entity

- » The Architecture Capability Framework provides guidance on establishing an operational enterprise architecture practice
- » It recommends they include capabilities such as:
 - Financial Management
 - Performance Management
 - Service Management
 - Risk Management
 - Resource Management
 - Communications and Stakeholder Management
 - Quality Management
 - Supplier Management
 - Configuration Management
 - Environment Management

Copyright © The Open Group 2018

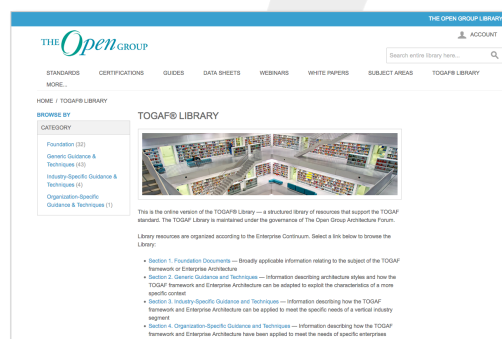
17

Copyright © 2009-2018 The Open Group, All Rights Reserved

The TOGAF Library



- » A reference library containing guidelines, templates, reference architectures, patterns, etc., to accelerate the creation of new architectures for the enterprise.
 - <https://publications.opengroup.org/togaf-library/>



Copyright © The Open Group 2018

18

TOGAF Reference Models



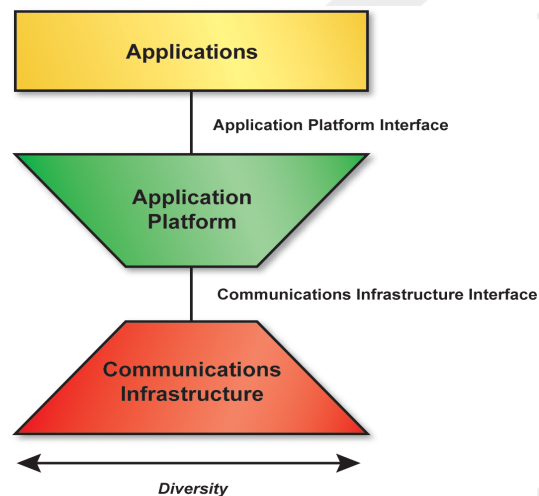
- » This course includes coverage of two Reference Models provided in the TOGAF Library
 - **The TOGAF Technical Reference Model (TRM)**
 - A Foundation Architecture
 - A model and a taxonomy of generic platform services
 - **The Integrated Information Infrastructure Model (III-RM).**
 - A model for business applications and infrastructure applications
 - Specifically aimed to support the vision of *Boundaryless Information Flow™*

Copyright © The Open Group 2018

19

Copyright © 2009-2018 The Open Group, All Rights Reserved

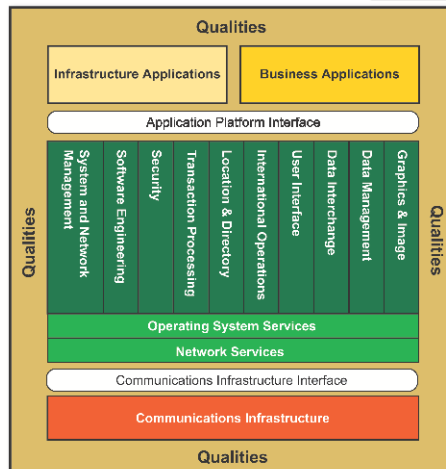
High-Level TRM



Copyright © The Open Group 2018

20

Detailed TRM



Copyright © The Open Group 2018

21

Copyright © 2009-2018 The Open Group, All Rights Reserved

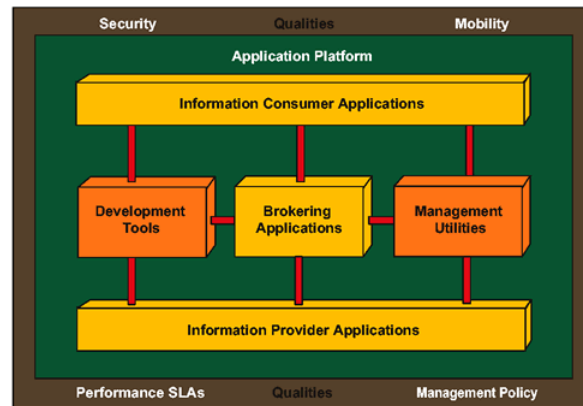
Boundaryless Information Flow™

- » A trademark of The Open Group
- » Access to integrated information to support business process improvements
- » An infrastructure that provides Boundaryless Information Flow has open standard components that provide services in a customer's extended enterprise that:
 - Combine multiple sources of information
 - Securely deliver the information whenever and wherever it is needed, in the right context for the people or systems using that information

Copyright © The Open Group 2018

22

The Integrated Information Infrastructure Reference Model (III-RM)



Copyright © The Open Group 2018



Copyright © 2009-2018 The Open Group, All Rights Reserved

Summary

- » Architecture Development Method (ADM)
 - An iterative sequence of steps to develop an enterprise-wide architecture
- » ADM Guidelines and Techniques
 - Guidelines and techniques to support the application of the ADM
- » Architecture Content Framework
 - A detailed model of architectural work products, including deliverables, artifacts within deliverables, and the Architecture Building Blocks (ABBs) that deliverables represent.

Copyright © The Open Group 2018



Summary

- » The Enterprise Continuum
 - A model for structuring a virtual repository and methods for classifying architecture and solution artifacts.
 - Supported by the Architecture Repository, a model for a physical repository
- » The Architecture Capability Framework
 - A structured definition of the organizations, skills, roles and responsibilities to establish and operate an Enterprise Architecture.
- » The TOGAF Library
 - A reference library containing guidelines, templates, patterns, and other forms of reference material to accelerate the creation of new Enterprise Architectures.

Copyright © The Open Group 2018

25

Copyright © 2009-2018 The Open Group, All Rights Reserved

Test Yourself Question

Copyright © The Open Group 2018



Test Yourself Question

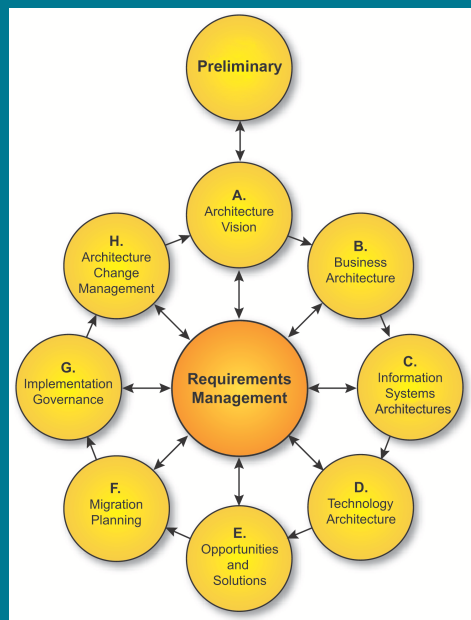
Q: Which of the following is not considered one of the main parts of the TOGAF standard?

- A. Architecture Development Method
- B. Enterprise Continuum
- C. TOGAF Reference Models
- D. TOGAF Resource Base

Copyright © The Open Group 2018

27

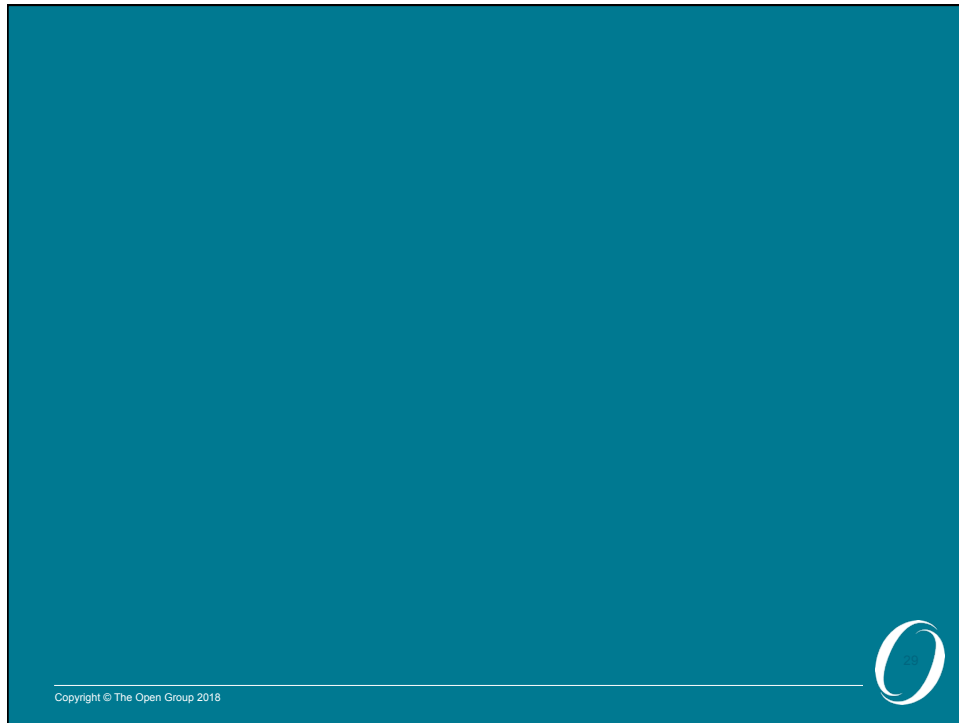
Copyright © 2009-2018 The Open Group, All Rights Reserved



The TOGAF Framework Components

TOGAF is a registered trademark of The Open Group in the United States and other countries

Copyright © The Open Group 2018



Copyright © 2009-2018 The Open Group, All Rights Reserved